



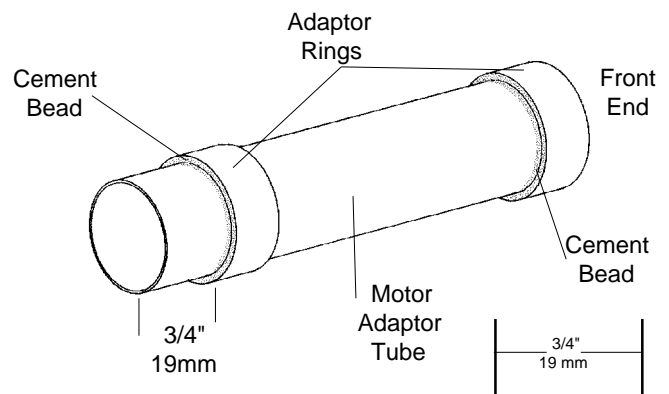
MOTOR ADAPTER ASSEMBLY INSTRUCTIONS

(NOTE: Use medium viscosity cyanoacrylate cement.)

1. Lightly sand the motor adaptor tube and then slide an adaptor ring onto the tube until the end of the ring is flush with the end of the tube. This ring marks the front end of the adaptor tube. Slide the other adaptor ring onto the other end of the adaptor tube until the back edge of the ring is 3/4" (19 mm) from the back end of the tube. Apply beads of cement where the rings meet the adaptor tube.
2. Insert the "E" motor spacer tube into the motor adaptor tube and position it at the front end of the adaptor tube. DO NOT cement in place.

Parts:

Motor adaptor tube (4-7/8"/124mm)	(12421)	1
Adaptor rings (1/2"/13mm)	(14001)	2
"E" spacer tube (2-1/8"/54mm)	(14002)	1



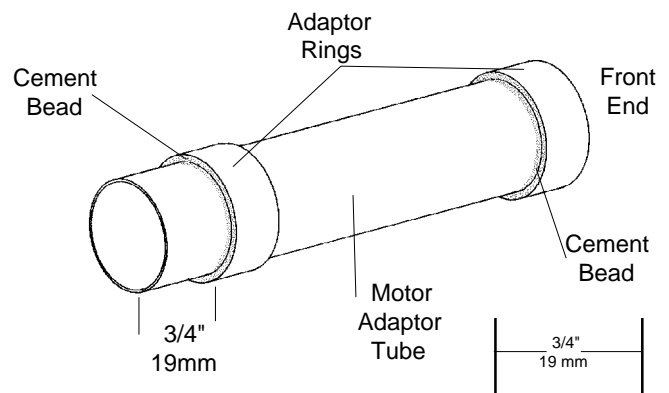
MOTOR ADAPTER ASSEMBLY INSTRUCTIONS

(NOTE: Use medium viscosity cyanoacrylate cement.)

1. Lightly sand the motor adaptor tube and then slide an adaptor ring onto the tube until the end of the ring is flush with the end of the tube. This ring marks the front end of the adaptor tube. Slide the other adaptor ring onto the other end of the adaptor tube until the back edge of the ring is 3/4" (19 mm) from the back end of the tube. Apply beads of cement where the rings meet the adaptor tube.
2. Insert the "E" motor spacer tube into the motor adaptor tube and position it at the front end of the adaptor tube. DO NOT cement in place.

Parts:

Motor adaptor tube (4-7/8"/124mm)	(12421)	1
Adaptor rings (1/2"/13mm)	(14001)	2
"E" spacer tube (2-1/8"/54mm)	(14002)	1



MOTOR ADAPTER ASSEMBLY INSTRUCTIONS

(NOTE: Use medium viscosity cyanoacrylate cement.)

1. Lightly sand the motor adaptor tube and then slide an adaptor ring onto the tube until the end of the ring is flush with the end of the tube. This ring marks the front end of the adaptor tube. Slide the other adaptor ring onto the other end of the adaptor tube until the back edge of the ring is 3/4" (19 mm) from the back end of the tube. Apply beads of cement where the rings meet the adaptor tube.
2. Insert the "E" motor spacer tube into the motor adaptor tube and position it at the front end of the adaptor tube. DO NOT cement in place.

Parts:

Motor adaptor tube (4-7/8"/124mm)	(12421)	1
Adaptor rings (1/2"/13mm)	(14001)	2
"E" spacer tube (2-1/8"/54mm)	(14002)	1

