

8

7

6

5

4

3

2

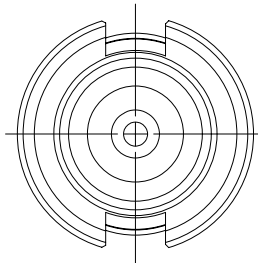
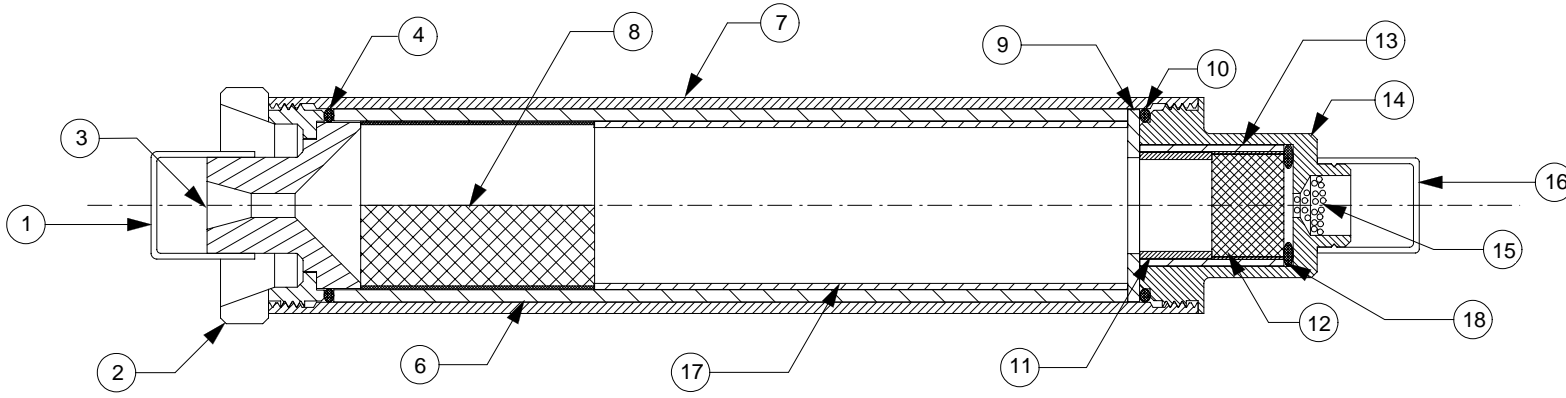
1

### REVISIONS

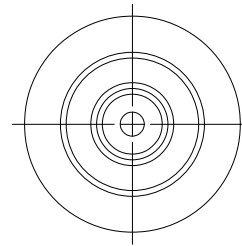
| EFFECTIVITY | REV | DESCRIPTION         | DATE         | APPROVED |
|-------------|-----|---------------------|--------------|----------|
| FUTURE      | A   | FIRST RELEASE ISSUE | 11 / 11 / 99 |          |

#### NOTES:

1. MOTOR ASSEMBLY SHOWN WITH SPECIFIED MOTOR HARDWARE & RELOAD KIT.



VIEW AFT CLOSURE



VIEW FORWARD CLOSURE

|    |         |  |    |
|----|---------|--|----|
| 1  | 00111   | DELAY O-RING (5/8" O.D. X 3/32") 111       | 18 |
| 1  | 03105   | GRAIN SPACER (.862" O.D. X 2.781")         | 17 |
| 1  | 04716   | EJECTION CHARGE CAP (7/16" I.D.)           | 16 |
| 1  | 03700   | EJECTION CHARGE (.7 GRAMS)                 | 15 |
| 1  | 91292   | FORWARD CLOSURE                            | 14 |
| 1  | 03072   | DELAY INSULATOR (.629" O.D. X .75")        | 13 |
| 1  | 03203   | DELAY GRAIN (.562" O.D. X .375")           | 12 |
| 1  | 03059   | DELAY SPACER (.553" O.D. X .375")          | 11 |
| 1  | 00020   | FORWARD O-RING (1" O.D. X 1/16") 020       | 10 |
| 1  | 05402   | FORWARD INSULATOR (1" O.D.X.5" I.D.X1/16") | 9  |
| 1  | 03525-2 | PROPELLANT GRAINS (.872" O.D. X 1.219")    | 8  |
| 1  | 910813A | CASE                                       | 7  |
| 1  | 02020   | LINER (1.005" O.D. X 4.14")                | 6  |
| NA |         | AFT INSULATOR                              | 5  |
| 1  | 00020   | AFT O-RING (1" O.D. X 1/16") 020           | 4  |
| 1  | 01300-1 | NOZZLE (E15/E28) DRILLED .125"             | 3  |
| 1  | 910811C | AFT CLOSURE                                | 2  |
| 1  | 04120   | NOZZLE CAP (1/2" I.D.)                     | 1  |

| QTY              | PART NUMBER  | DESCRIPTION   | ITEM   |
|------------------|--------------|---|--------|
| LIST OF MATERIAL |              |   |        |
| CONTRACT NUMBER  |              | <b>AEROTECH</b><br>CONSUMER AEROSPACE<br>2113 W. 850 N. Street<br>Cedar City, Utah 84720<br>(435) 865-7100 (Ph)<br>(435) 865-7120 (Fax) |        |
| PREP             | B. ROSENFELD |   |        |
| CHKR             |              |   |        |
| APVD             |              | SIZE <b>A</b>   | NUMBER |
| APVD             |              | <b>ASSY DWG</b>   |        |
| SCALE 1 / 1      |              | SHEET 1 OF 1  |        |

| SUPPLIER DATA |  | RELOAD KIT IDENTIFICATION |                    | UNLESS OTHERWISE SPECIFIED DIMENSIONS ARE IN INCHES |                  |                      |
|---------------|--|---------------------------|--------------------|---|------------------|----------------------|
| AEROTECH INC. |  | 52305                     | E23-5T             | .XX<br>+/- .010                                     | .XXX<br>+/- .005 | ANGLES<br>+/- 2 deg. |
|               |  |                           |                    | MATERIAL  |                  |                      |
|               |  |                           |                    | NOTED   |                  |                      |
|               |  |                           |                    | FINISH  |                  |                      |
|               |  | <b>PART NUMBER</b>        | <b>DESCRIPTION</b> |   |                  |                      |

8

7

6

5

4

3

2

1