

8

7

6

5

4

3

2

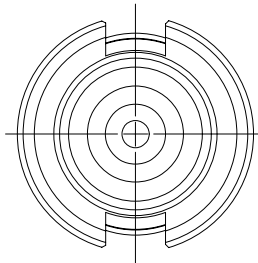
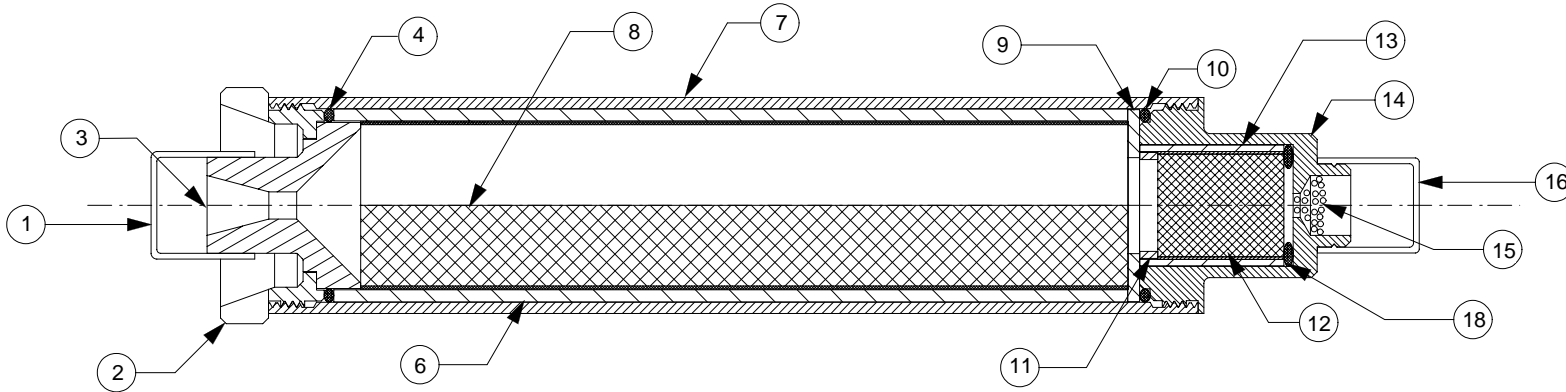
1

REVISIONS

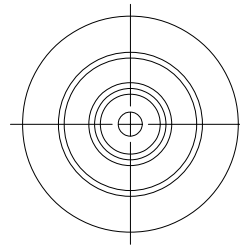
| EFFECTIVITY | REV | DESCRIPTION         | DATE         | APPROVED |
|-------------|-----|---------------------|--------------|----------|
| FUTURE      | A   | FIRST RELEASE ISSUE | 11 / 11 / 99 |          |

NOTES:

1. MOTOR ASSEMBLY SHOWN WITH SPECIFIED MOTOR HARDWARE & RELOAD KIT.



VIEW AFT CLOSURE



VIEW FORWARD CLOSURE

|    |         |   |    |
|----|---------|---|----|
| 1  | 00111   | DELAY O-RING (5/8" O.D. X 3/32") 111    | 18 |
| NA |         | GRAIN SPACER                            | 17 |
| 1  | 04716   | EJECTION CHARGE CAP (7/16" I.D.)        | 16 |
| 1  | 03700   | EJECTION CHARGE (.7 GRAMS)              | 15 |
| 1  | 91292   | FORWARD CLOSURE                         | 14 |
| 1  | 03072   | DELAY INSULATOR (.629" O.D. X .75")     | 13 |
| 1  | 03214   | DELAY GRAIN (.562" O.D. X .657")        | 12 |
| 1  | 03050   | DELAY SPACER (.553" O.D. X .094")       | 11 |
| 1  | 00020   | FORWARD O-RING (1" O.D. X 1/16") 020    | 10 |
| 1  | 05402   | FORWARD INS. (1" O.D.X.5" I.D.X1/16")   | 9  |
| 1  | 03531   | PROPELLANT GRAINS (.872" O.D. X 4.000") | 8  |
| 1  | 910813A | CASE                                    | 7  |
| 1  | 02020   | LINER (1.005" O.D. X 4.14")             | 6  |
| NA |         | AFT INSULATOR                           | 5  |
| 1  | 00020   | AFT O-RING (1" O.D. X 1/16") 020        | 4  |
| 1  | 01350   | NOZZLE (E30/E50)                        | 3  |
| 1  | 910811C | AFT CLOSURE                             | 2  |
| 1  | 04120   | NOZZLE CAP (1/2" I.D.)                  | 1  |

| QTY              | PART NUMBER  | DESCRIPTION  | ITEM   |
|------------------|--------------|--|--|
| LIST OF MATERIAL |              |  |  |
| CONTRACT NUMBER  |              | <br>2113 W. 850 N. Street<br>Cedar City, Utah 84720<br>(435) 865-7100 (Ph)<br>(435) 865-7120 (Fax) |  |
| PREP             | B. ROSENFELD | 8 / 99   | <b>RMS-29/40 MOTOR WITH G64-7W RELOAD KIT</b><br><br><b>ASSY DWG</b> |
| CHKR             |              |  |  |
| APVD             |              | SIZE <b>A</b>  | NUMBER   |
| APVD             |              | SCALE 1 / 1  | SHEET 1 OF 1   |

| SUPPLIER DATA |  | RELOAD KIT IDENTIFICATION |                    | UNLESS OTHERWISE SPECIFIED DIMENSIONS ARE IN INCHES |                  |                      |
|---------------|--|---------------------------|--------------------|---|------------------|----------------------|
| AEROTECH INC. |  | 76407                     | G64-7W             | .XX<br>+/- .010                                     | .XXX<br>+/- .005 | ANGLES<br>+/- 2 deg. |
|               |  |                           |                    | MATERIAL  |                  |                      |
|               |  |                           |                    | NOTED   |                  |                      |
|               |  |                           |                    | FINISH  |                  |                      |
|               |  | <b>PART NUMBER</b>        | <b>DESCRIPTION</b> |   |                  |                      |

8

7

6

5

4

3

2

1