

8

7

6

5

4

3

2

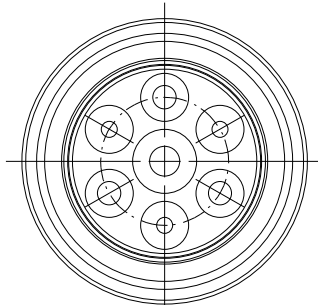
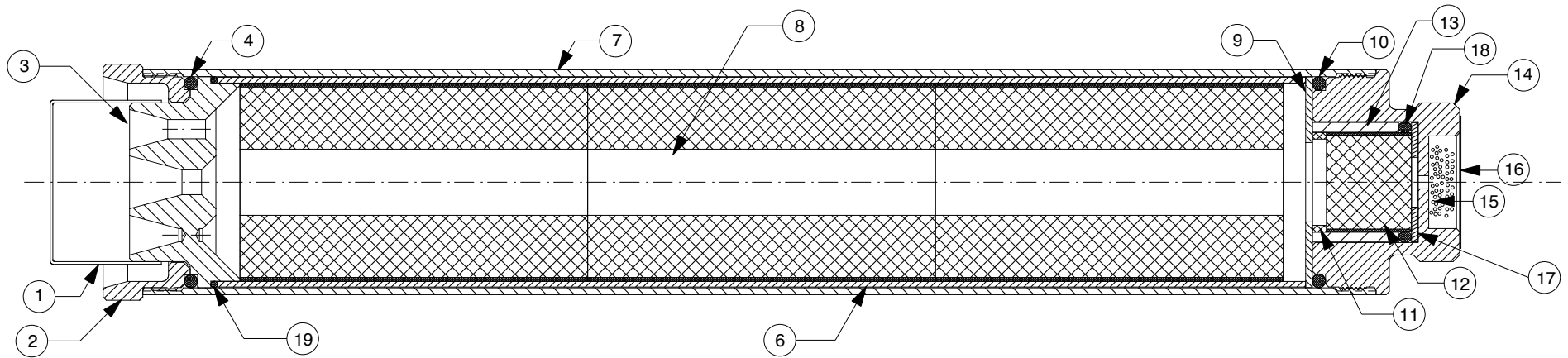
1

REVISIONS

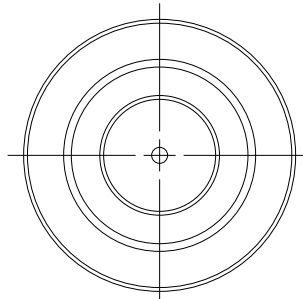
| EFFECTIVITY | REV | DESCRIPTION | DATE | APPROVED |
|-------------|-----|---------------------|--------|----------|
| FUTURE | A | FIRST RELEASE ISSUE | 7/3/07 | |

NOTES:

1. MOTOR ASSEMBLY SHOWN WITH SPECIFIED MOTOR HARDWARE & RELOAD KIT.



VIEW AFT CLOSURE



VIEW FORWARD CLOSURE

| QTY | PART NUMBER | DESCRIPTION | ITEM |
|-----|-------------|---|------|
| 1 | 00032 | LINER O-RING (2" O.D. X 1/16") 032 | 19 |
| 1 | 00002 | DELAY O-RING (1.17" O.D. X .123") | 18 |
| 1 | 03355 | FWD DELAY SPACER (1-1/8" O.D. X .062") | 17 |
| 1 | 05604 | EJECTION CHARGE CAP (1-1/4") | 16 |
| 1 | 03700 | EJECTION CHARGE (USER SUPPLIED) | 15 |
| 1 | 54FCC | FORWARD CLOSURE (REGULAR) | 14 |
| 1 | 03356 | DELAY INSULATOR (1.13" O.D. X .815") | 13 |
| 1 | 03920 | DELAY GRAIN (.933" O.D. X 803") | 12 |
| 1 | 03970 | AFT DELAY SPACER (.94" O.D. X .135") | 11 |
| 1 | 00224 | FORWARD O-RING (2" O.D. X 1/8") 224 | 10 |
| 1 | 05406 | FORWARD INSULATOR (1.99" O.D. X 1/16") | 9 |
| 3 | 03601-4 | PROPELLANT GRAINS (1.87" O.D. X 3.285") | 8 |
| 1 | 5412C | CASE | 7 |
| 1 | 03000-3 | PHENOLIC LINER (1.99" O.D. X 10.280") | 6 |
| NA | | INNER LINER | 5 |
| 1 | 00224 | AFT O-RING (2" O.D. X 1/8") 224 | 4 |
| 1 | 01700-6 | NOZZLE (54MM MEDUSA)1x.234"/ 3x.182" | 3 |
| 1 | 54ACC | AFT CLOSURE | 2 |
| 1 | 04112 | NOZZLE CAP (1.5" I.D.) | 1 |

| SUPPLIER DATA | | RELOAD KIT IDENTIFICATION | |
|------------------------|--------|---------------------------|----------|
| AEROTECH/RCS RMC, INC. | 10401L | J401FJ-L | RMS-PLUS |
| PART NUMBER | | DESCRIPTION | |

| UNLESS OTHERWISE SPECIFIED DIMENSIONS ARE IN INCHES | | | |
|---|------------------|--|--|
| .XX +/- .010 | .XXX +/- .005 | ANGLES +/- 2 deg. | |
| MATERIAL | | | |
| NOTED | | | |
| FINISH | | | |
| LIST OF MATERIAL | | | |
| CONTRACT NUMBER | | 2113 W. 850 N. Street Cedar City, Utah 84720 (435) 865-7100 (Ph) (435) 865-7120 (Fax) | |
| PREP CHKR | G. ROSENFELD | 7/07 | HP 54/1280 MOTOR WITH J401FJ-L RMS-PLUS™ RELOAD KIT |
| APVD | | SIZE A | NUMBER ASSY DWG |
| APVD | | SCALE 1/1.5 | SHEET 1 OF 1 |

8

7

6

5

4

3

2

1