

8

7

6

5

4

3

2

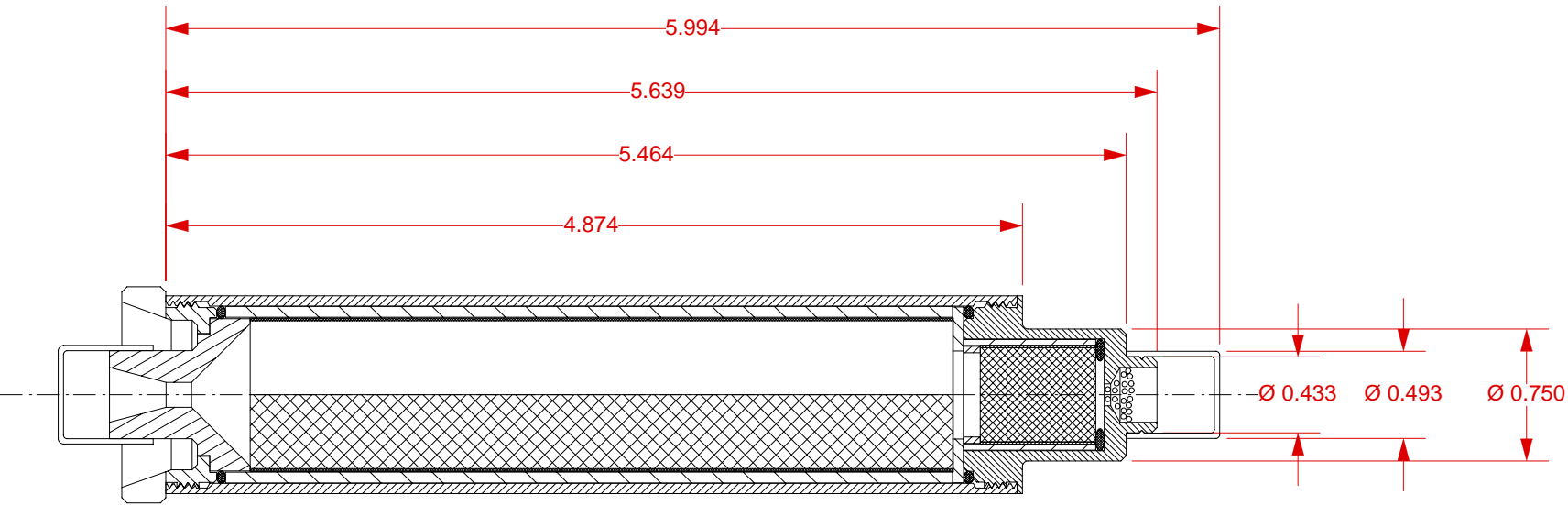
1

REVISIONS

EFFECTIVITY	REV	DESCRIPTION	DATE	APPROVED
FUTURE	A	FIRST RELEASE ISSUE	10 / 8 / 03	

NOTES:

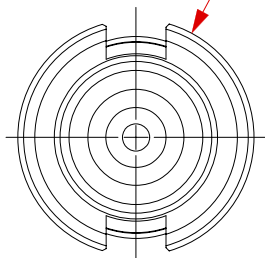
1. MOTOR ASSEMBLY SHOWN WITH OVERALL EXTERIOR DIMENSIONS.



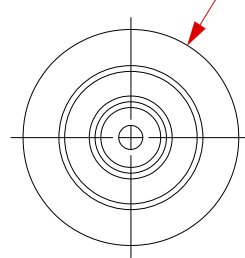
0.250

Ø 1.230

Ø 1.125



VIEW AFT CLOSURE



VIEW FORWARD CLOSURE

SUPPLIER DATA

USED IN THE FOLLOWING PRODUCTS

UNLESS OTHERWISE SPECIFIED DIMENSIONS ARE IN INCHES

.XX
+/- .010

.XXX
+/- .005

ANGLES
+/- 2 deg.

MATERIAL

FINISH

QTY	PART NUMBER	DESCRIPTION	ITEM
LIST OF MATERIAL			
CONTRACT NUMBER		AEROTECH CONSUMER AEROSPACE 2113 W. 850 N. Street Cedar City, Utah 84720 (435) 865-7100 (Ph) (435) 865-7120 (Fax)	
PREP	B. ROSENFELD	10 / 03	RMS-29/40 MOTOR DIMENSIONAL DRAWING ASSY DWG
CHKR			
APVD			
APVD			
SCALE 1 / 1		SHEET 1 OF 1	

PART NUMBER

DESCRIPTION

PART NUMBER

DESCRIPTION

8

7

6

5

4

3

2

1