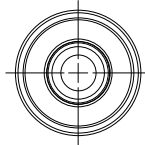
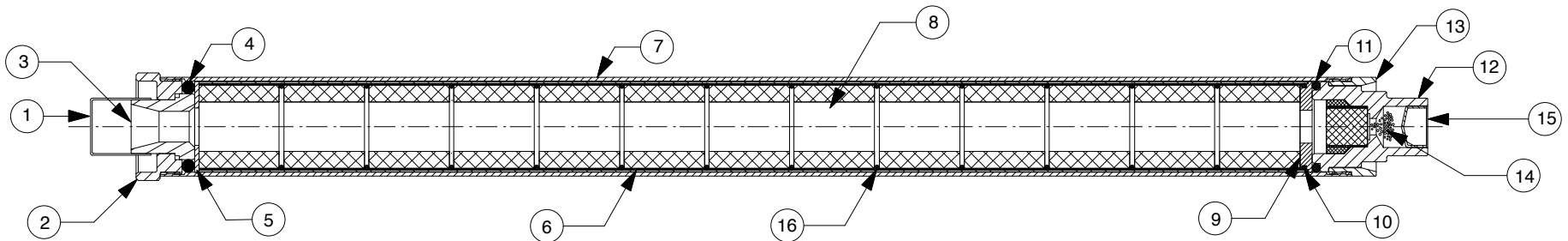


**NOTES:**

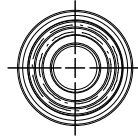
1. MOTOR ASSEMBLY SHOWN WITH SPECIFIED MOTOR HARDWARE & RELOAD KIT.

**REVISIONS**

EFFECTIVITY	REV	DESCRIPTION	DATE	APPROVED
FUTURE	A	FIRST RELEASE ISSUE	4 / 27 / 17	
FUTURE	B	UPDATED TO RMS-EZ DESIGN	9 / 8 / 18	



VIEW AFT CLOSURE



VIEW FORWARD CLOSURE

12	00025	GRAIN SPACER O-RINGS (1.313" X 1/16") 025	16
1	0406-5	EJECTION CAPLUG	15
1	05708	EJECTION CHARGE ASSY	14
1	38FCRR	38MM FWD CLOSURE RETAINING RING	13
1	38EZBAG	RMS-EZ FWD BULKHEAD ASSY (.625" LONG REG DLY)	12
1	00216	FORWARD O-RING (1 3/8" O.D. X 1/8") 216	11
1	00025	SEAL DISC O-RING (1.313" X 1/16") 025	10
1	38601	FWD SEAL DISC (1.375" O.D. X .5" I.D. X .188")	9
13	03W38-4	PROPELLANT (1.308" O.D. X 1.224" X .750" CORE) 8225W	8
1	3810C	CASE	7
1	02065-9	PHENOLIC LINER (1.368" O.D. X 16.875")	6
1	05404	AFT INSULATOR (1.375" O.D. X .562" I.D. X 1/16")	5
1	00318	AFT O-RING (1.375" O.D. X 3/16") 318	4
1	01550-7	NOZZLE (NEW L2) DRILLED .459"	3
1	38AC2	AFT CLOSURE L2	2
1	041316	NOZZLE CAP (13/16" I.D.)	1

QTY		PART NUMBER	DESCRIPTION	ITEM
LIST OF MATERIAL				
CONTRACT NUMBER		<p>2113 W. 850 N. Street Cedar City, Utah 84721 (435) 865-7100 (Ph) (435) 865-7120 (Fax)</p>		
PREP	G. ROSENFELD			
CHKR			<p>SIZE <b>A</b> NUMBER <b>ASSY DWG</b></p>	
APVD			SCALE 1 / 2.5	SHEET 1 OF 1
APVD				

SUPPLIER DATA		RELOAD KIT IDENTIFICATION		UNLESS OTHERWISE SPECIFIED DIMENSIONS ARE IN INCHES		
AEROTECH/RCS RMC INC.		105214	J520W-13A RMS-EZ	.XX +/- .010	.XXX +/- .005	ANGLES +/- 2 deg.
				MATERIAL		
				NOTED		
				FINISH		
		PART NUMBER	DESCRIPTION			

8

7

6

5

4

3

2

1